

**LINEA DIVISORIA INTERNACIONAL
TERRESTRE**

TRAZADA DE CONFORMIDAD CON EL TRATADO DE 1970

R. Salmon

ROBERTO F. SALMON CASTELO
COMISIONADO DE MEXICO



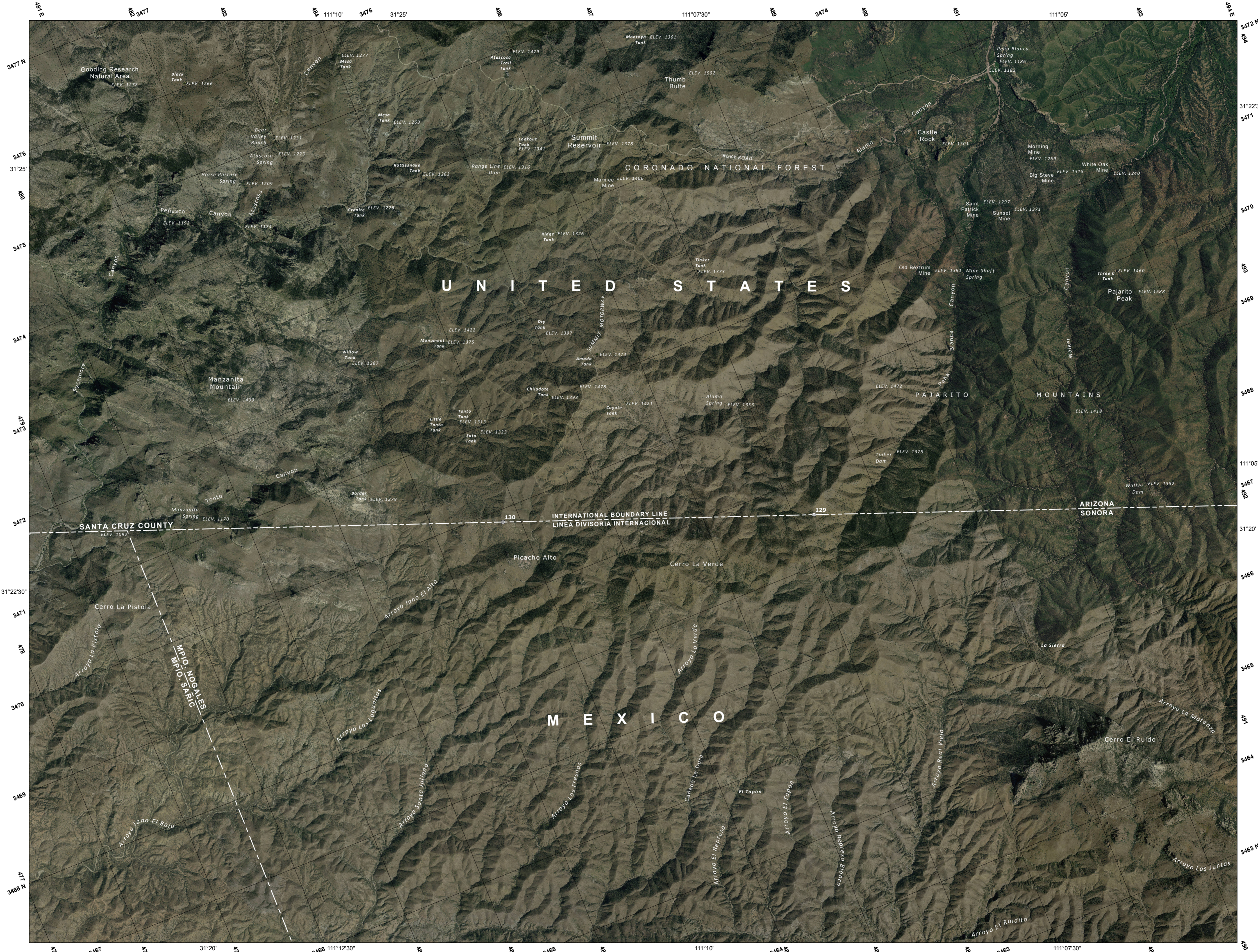
MANZANITA MOUNTAIN / MATANZA
2012

**INTERNATIONAL LAND
BOUNDARY**

DELINEATED IN ACCORDANCE WITH THE TREATY OF 1970

E. Drusna

EDWARD DRUSNA
COMMISSIONER OF THE UNITED STATES



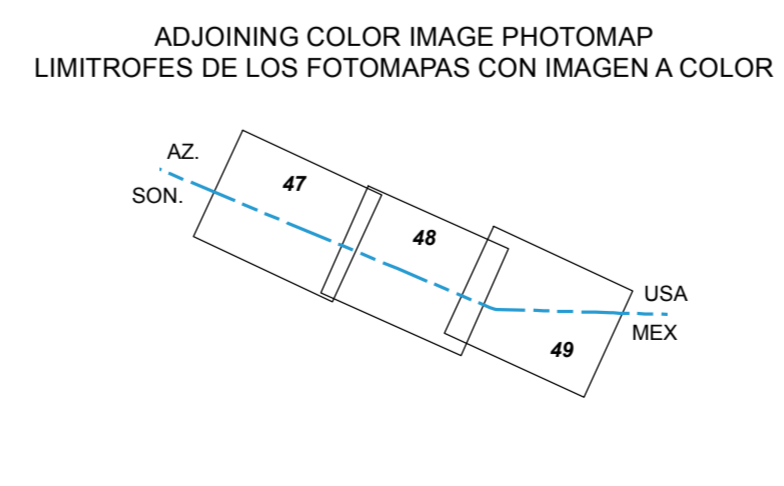
PROYECCION UNIVERSAL TRANSVERSA DE MERCATOR
CUADRICULA UNIVERSAL TRANSVERSA DE MERCATOR
A CADA KILOMETRO, ZONA 12
DATUM HORIZONTAL NAD 83
ESTE FOTOMAPA CON IMAGEN A COLOR
SE FORMO CON FOTOGRAFIAS AEREAS
TOMADAS EN 2008 - 2009 POR NGA
BASE TOPONIMICA BINACIONAL POR INEGI - USGS
EDICION CARTOGRAFICA POR INEGI

Escala 1 : 25 000
ESCALA EN KILOMETROS
ELEVACIONES EN METROS



2008 MAGNETIC NORTH DECLINATION 10° 39' E
UTM GRID DECLINATION 0° 5' E
ANNUAL MAGNETIC VARIATION 0° 5' W

DECLINACION DEL NORTE MAGNETICO PARA 2008 10° 39' E
DECLINACION DE LA CUADRICULA UTM 0° 5' E
VARIACION MAGNETICA ANUAL 0° 5' W



UNIVERSAL TRANSVERSE MERCATOR PROJECTION
UNIVERSAL TRANSVERSE MERCATOR
IN KILOMETERS GRID, ZONE 12
HORIZONTAL DATUM NAD 83
THIS COLOR IMAGE PHOTOMAP WAS PREPARED
FROM AERIAL PHOTOGRAPHS
TAKEN IN 2008 - 2009 BY NGA
BINATIONAL TOPONIMIC BASE BY USGS - INEGI
CARTOGRAPHIC EDITING BY INEGI

Scale 1 : 25 000
SCALE IN FEET
ELEVATION IN METERS