

**LINEA DIVISORIA INTERNACIONAL
TERRESTRE**

TRAZADA DE CONFORMIDAD CON EL TRATADO DE 1970

R. Salmon

ROBERTO F. SALMON CASTELO
COMISIONADO DE MEXICO



WEST OF ANDRADE PORT OF ENTRY / RANCHO GRANDE

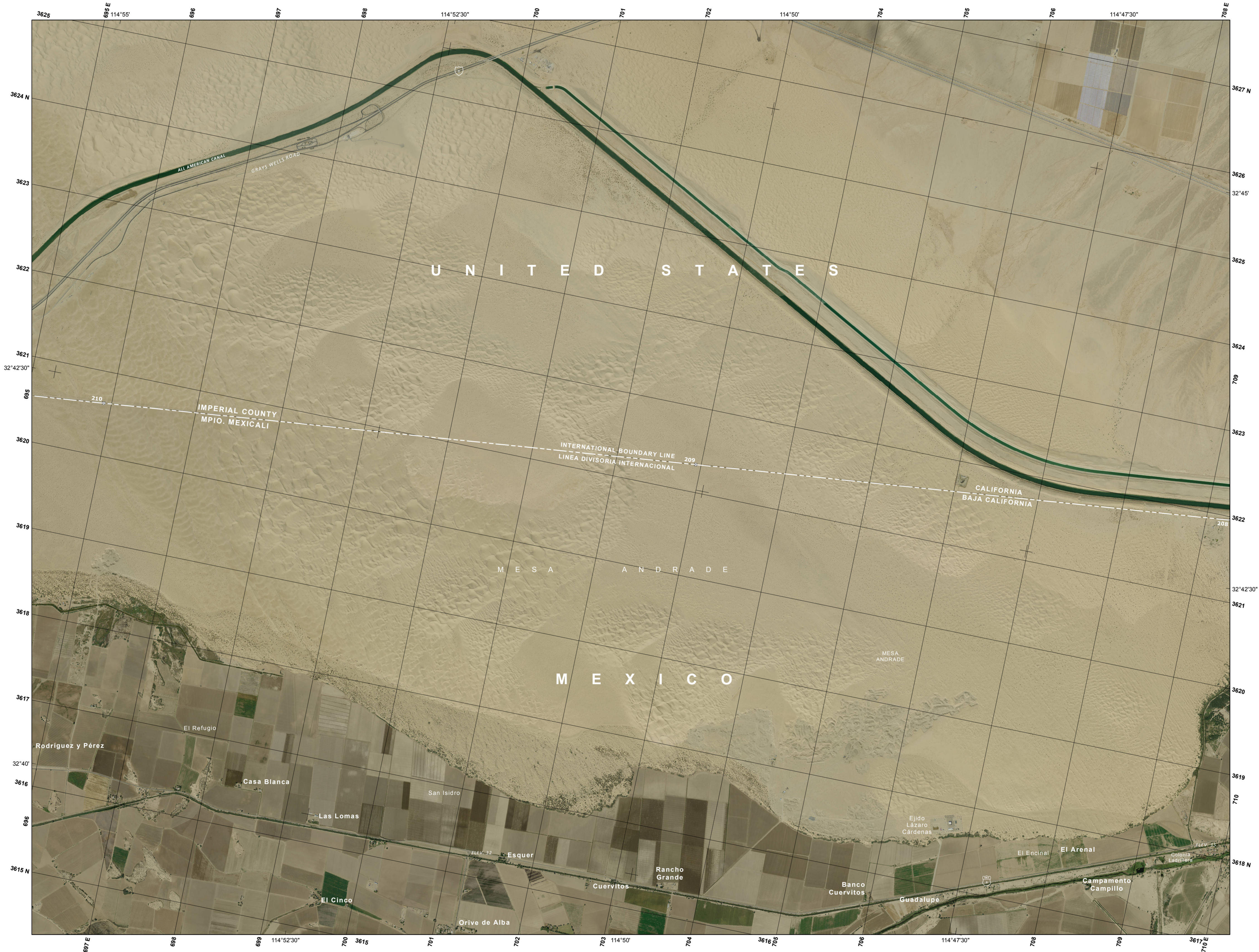
2012

**INTERNATIONAL LAND
BOUNDARY**

DELINEATED IN ACCORDANCE WITH THE TREATY OF 1970

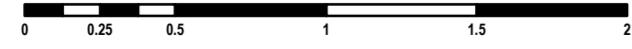
E. Drusna

EDWARD DRUSNA
COMMISSIONER OF THE UNITED STATES



PROYECCION UNIVERSAL TRANSVERSA DE MERCATOR

CUADRICULA UNIVERSAL TRANSVERSA DE MERCATOR
A CADA KILOMETRO, ZONA 11
DATUM HORIZONTAL NAD 83
ESTE FOTOMAPA CON IMAGEN A COLOR
SE FORMO CON FOTOGRAFIAS AEREAS
TOMADAS EN 2008 - 2009 POR NGA
BASE TOPONIMICA BINACIONAL POR INEGI - USGS
EDICION CARTOGRAFICA POR INEGI



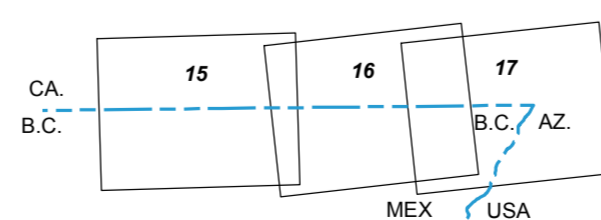
Escala 1 : 25 000

ESCALA EN KILOMETROS
ELEVACIONES EN METROS



2008 MAGNETIC NORTH DECLINATION 11° 52' E
UTM GRID DECLINATION 1° 10' W
ANNUAL MAGNETIC VARIATION 0° 5' W
DECLINACION DEL NORTE MAGNETICO PARA 2008 11° 52' E
DECLINACION DE LA CUADRICULA UTM 1° 10' W
VARIACION MAGNETICA ANUAL 0° 5' W

**ADJOINING COLOR IMAGE PHOTOMAP
LIMITROFES DE LOS FOTOMAPAS CON IMAGEN A COLOR**



MAP LOCATION
MAPA DE LOCALIZACION

UNIVERSAL TRANSVERSE MERCATOR PROJECTION

UNIVERSAL TRANSVERSE MERCATOR
IN KILOMETERS GRID, ZONE 11
HORIZONTAL DATUM NAD 83
THIS COLOR IMAGE PHOTOMAP WAS PREPARED
FROM AERIAL PHOTOGRAPHS
TAKEN IN 2008 - 2009 BY NGA
BINATIONAL TOPONYMIC BASE BY USGS - INEGI
CARTOGRAPHIC EDITING BY INEGI



Scale 1 : 25 000

SCALE IN FEET
ELEVATION IN METERS