

COMISION INTERNACIONAL DE LIMITES Y AGUAS  
ENTRE MEXICO Y LOS ESTADOS UNIDOS  
**LINEA DIVISORIA INTERNACIONAL  
EN EL RIO BRAVO**

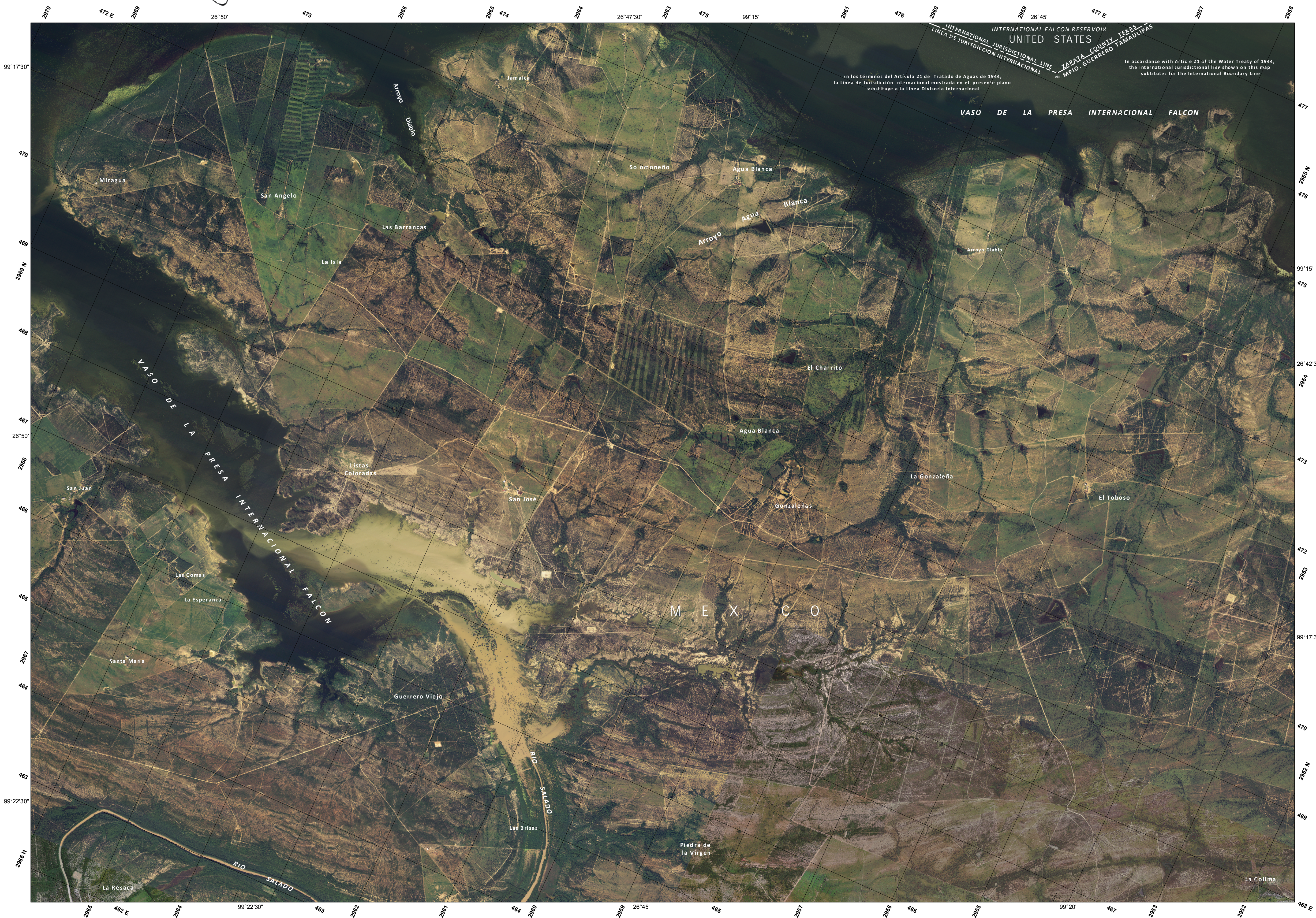
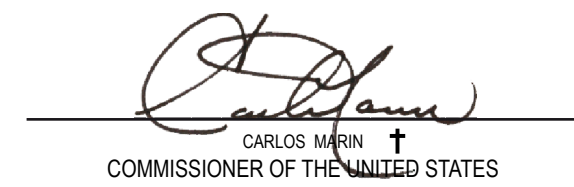
TRAZADA DE CONFORMIDAD CON EL TRATADO DE 1970



**GUERRERO VIEJO  
2008**

INTERNATIONAL BOUNDARY AND WATER COMMISSION  
UNITED STATES AND MEXICO  
**INTERNATIONAL BOUNDARY LINE  
IN THE RIO GRANDE**

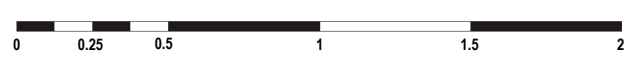
DELINEATED IN ACCORDANCE WITH THE TREATY OF 1970



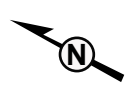
176

PROYECCION UNIVERSAL TRANSVERSA DE MERCATOR

CUADRICULA UNIVERSAL TRANSVERSA DE MERCATOR  
A CADA KILOMETRO, ZONA 14  
ESTE FOTOMAPA CON IMAGEN A COLOR  
SE FORMO CON FOTOGRAFIAS AEREAS  
TOMADAS EN AGOSTO DE 2004

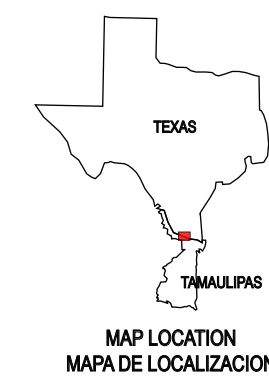
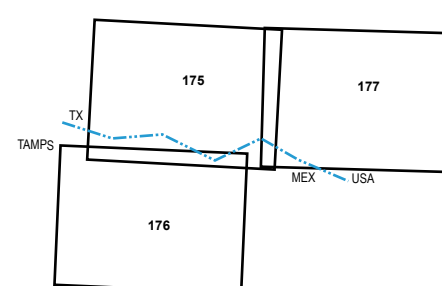


**Escala 1 : 25 000**  
ESCALA EN KILOMETROS  
ELEVACIONES EN METROS



2008 MAGNETIC NORTH DECLINATION 5° 40' EAST  
UTM GRID DECLINATION -0° 8'  
ANNUAL MAGNETIC VARIATION 0° 7' W  
DECLINACION DEL NORTE MAGNETICO PARA 2008 5° 40' E  
DECLINACION DE LA CUADRICULA UTM -0° 8'  
VARIACION MAGNETICA ANUAL 0° 7' W

ADJOINING COLOR IMAGE MAP  
LIMITROFES DE IMAGEN DE COLOR DE LOS MAPAS



MAP LOCATION  
MAPA DE LOCALIZACION

UNIVERSAL TRANSVERSE MERCATOR PROJECTION

UNIVERSAL TRANSVERSE MERCATOR  
IN KILOMETERS GRID, ZONE 14  
THIS COLOR IMAGE PHOTOMAP WAS PREPARED  
FROM AERIAL PHOTOGRAPHS  
TAKEN IN AUGUST 2004



**Scale 1 : 25 000**  
SCALE IN FEET  
ELEVATION IN METERS