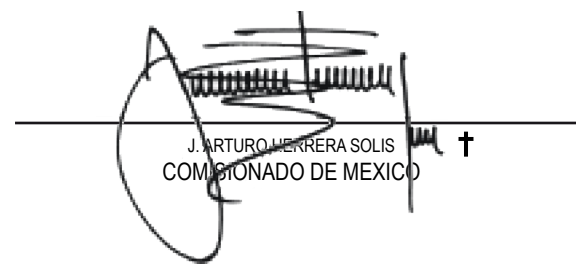


COMISION INTERNACIONAL DE LIMITES Y AGUAS  
ENTRE MEXICO Y LOS ESTADOS UNIDOS  
**LINEA DIVISORIA INTERNACIONAL  
EN EL RIO BRAVO**

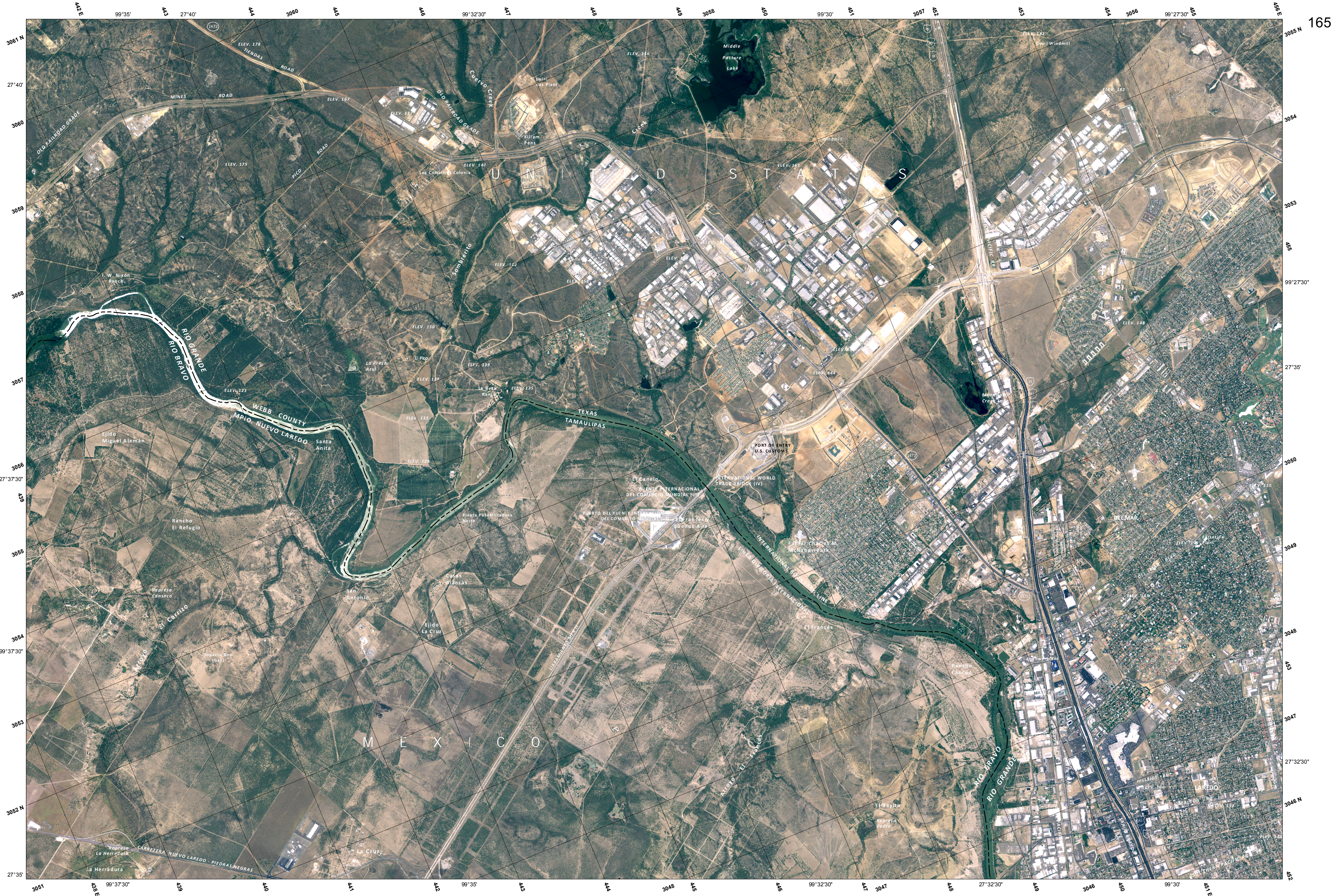
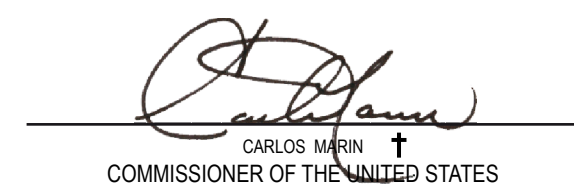
TRAZADA DE CONFORMIDAD CON EL TRATADO DE 1870



**LA BOTA RANCH / EJIDO LA CRUZ**  
2008

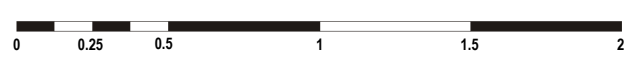
INTERNATIONAL BOUNDARY AND WATER COMMISSION  
UNITED STATES AND MEXICO  
**INTERNATIONAL BOUNDARY LINE  
IN THE RIO GRANDE**

DELINEATED IN ACCORDANCE WITH THE TREATY OF 1870



PROYECCION UNIVERSAL TRANSVERSA DE MERCATOR

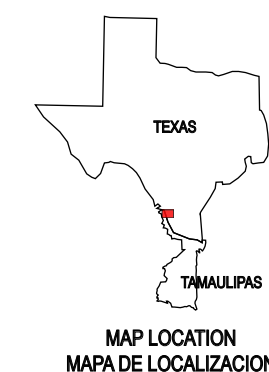
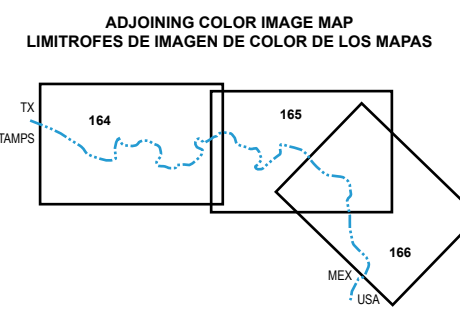
CUADRICULA UNIVERSAL TRANSVERSA DE MERCATOR  
A CADA KILOMETRO, ZONA 14  
ESTE FOTOMAPA CON IMAGEN A COLOR  
SE FORMO CON FOTOGRAFIAS AEREAS  
TOMADAS EN AGOSTO DE 2004



**Escala 1 : 25 000**  
ESCALA EN KILOMETROS  
ELEVACIONES EN METROS



2008 MAGNETIC NORTH DECLINATION 5° 47' EAST  
UTM GRID DECLINATION -0° 15'  
ANNUAL MAGNETIC VARIATION 0° 7' W  
DECLINACION DEL NORTE MAGNETICO PARA 2008 5° 47' E  
DECLINACION DE LA CUADRICULA UTM -0° 15'  
VARIACION MAGNETICA ANUAL 0° 7' W



UNIVERSAL TRANSVERSE MERCATOR PROJECTION

UNIVERSAL TRANSVERSE MERCATOR  
IN KILOMETERS GRID, ZONE 14  
THIS COLOR IMAGE PHOTOMAP WAS PREPARED  
FROM AERIAL PHOTOGRAPHS  
TAKEN IN AUGUST 2004



**Scale 1 : 25 000**  
SCALE IN FEET  
ELEVATION IN METERS