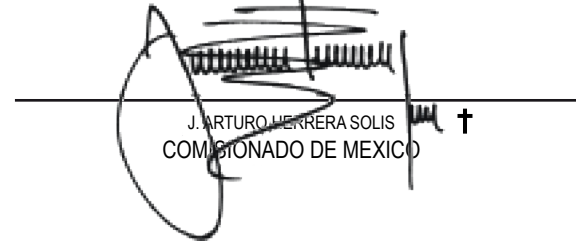
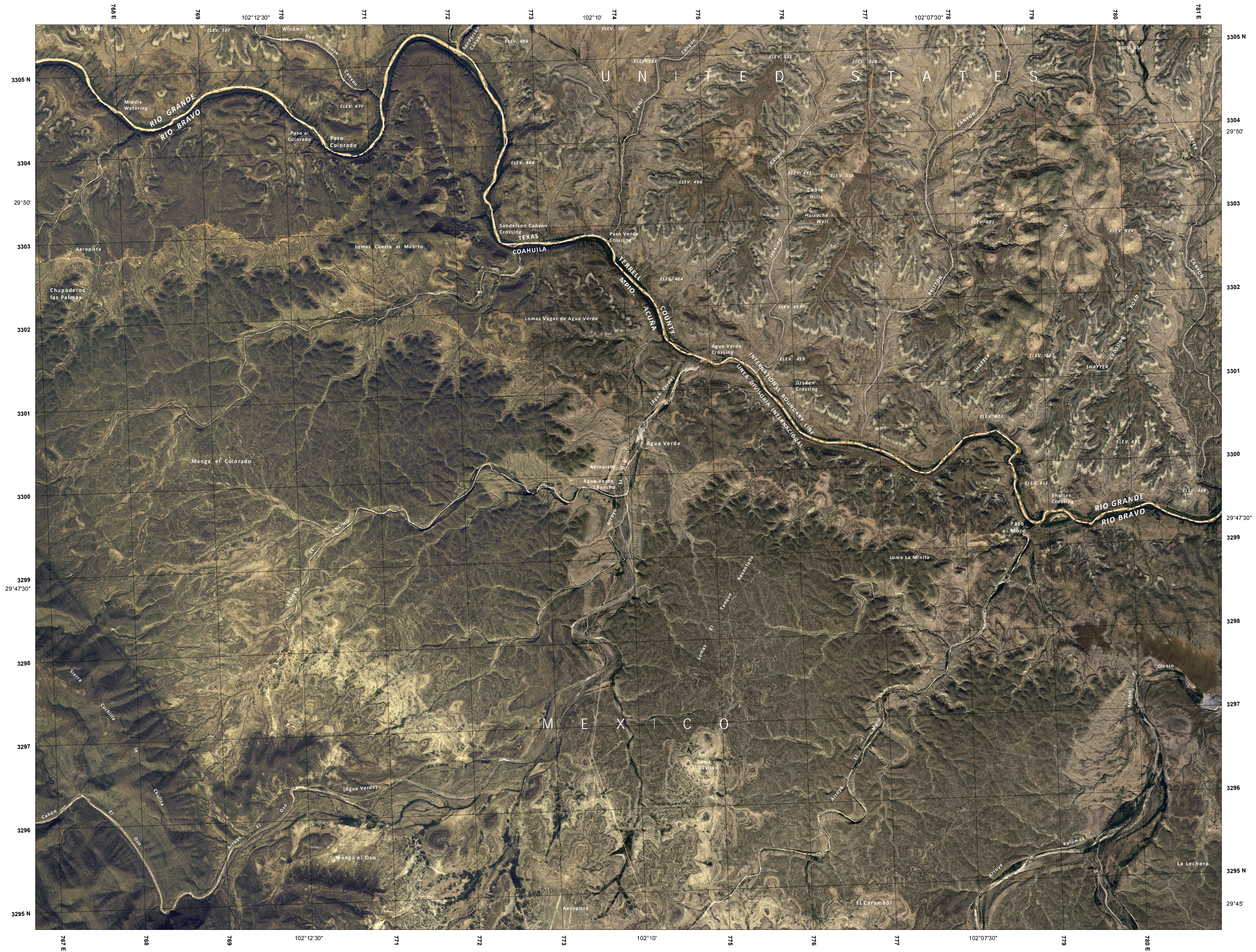
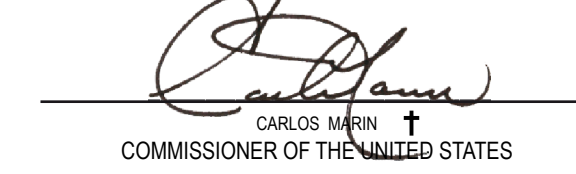


COMISION INTERNACIONAL DE LIMITES Y AGUAS  
ENTRE MEXICO Y LOS ESTADOS UNIDOS  
**LINEA DIVISORIA INTERNACIONAL  
EN EL RIO BRAVO**  
TRAZADA DE CONFORMIDAD CON EL TRATADO DE 1970



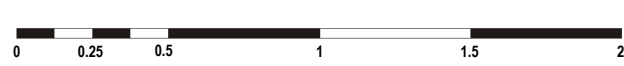
**SHAFTER HILLS / RANCHO AGUA VERDE**  
2008

INTERNATIONAL BOUNDARY AND WATER COMMISSION  
UNITED STATES AND MEXICO  
**INTERNATIONAL BOUNDARY LINE  
IN THE RIO GRANDE**  
DELINEATED IN ACCORDANCE WITH THE TREATY OF 1970



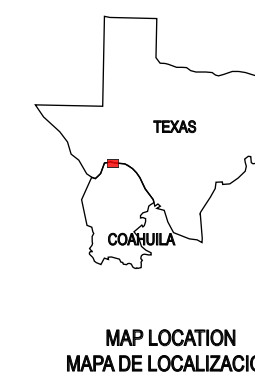
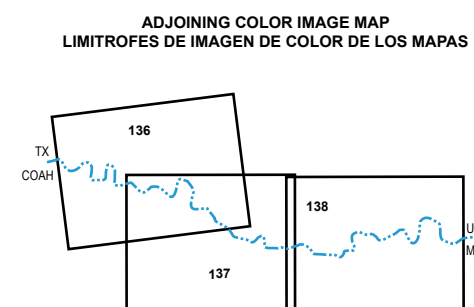
PROYECCION UNIVERSAL TRANSVERSA DE MERCATOR

CUADRICULA UNIVERSAL TRANSVERSA DE MERCATOR  
A CADA KILOMETRO, ZONA 13  
ESTE FOTOMAPA CON IMAGEN A COLOR  
SE FORMO CON FOTOGRAFIAS AEREAS  
TOMADAS EN AGOSTO DE 2004



**Escala 1 : 25 000**  
ESCALA EN KILOMETROS  
ELEVACIONES EN METROS

2008 MAGNETIC NORTH DECLINATION 7° 6' EAST  
UTM GRID DECLINATION 1° 25'  
ANNUAL MAGNETIC VARIATION 0° 7' W  
DECLINACION DEL NORTE MAGNETICO PARA 2008 7° 6' E  
DECLINACION DE LA CUADRICULA UTM 1° 25'  
VARIACION MAGNETICA ANUAL 0° 7' W



UNIVERSAL TRANSVERSE MERCATOR PROJECTION

UNIVERSAL TRANSVERSE MERCATOR  
IN KILOMETERS GRID, ZONE 13  
THIS COLOR IMAGE PHOTOMAP WAS PREPARED  
FROM AERIAL PHOTOGRAPHS  
TAKEN IN AUGUST 2004



**Scale 1 : 25 000**  
SCALE IN FEET  
ELEVATION IN METERS