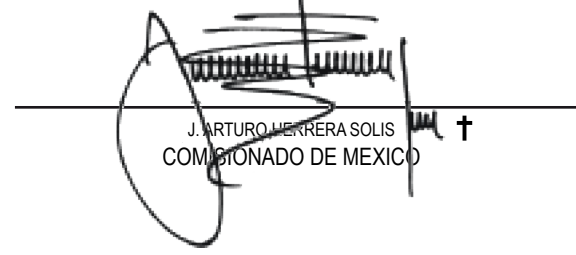
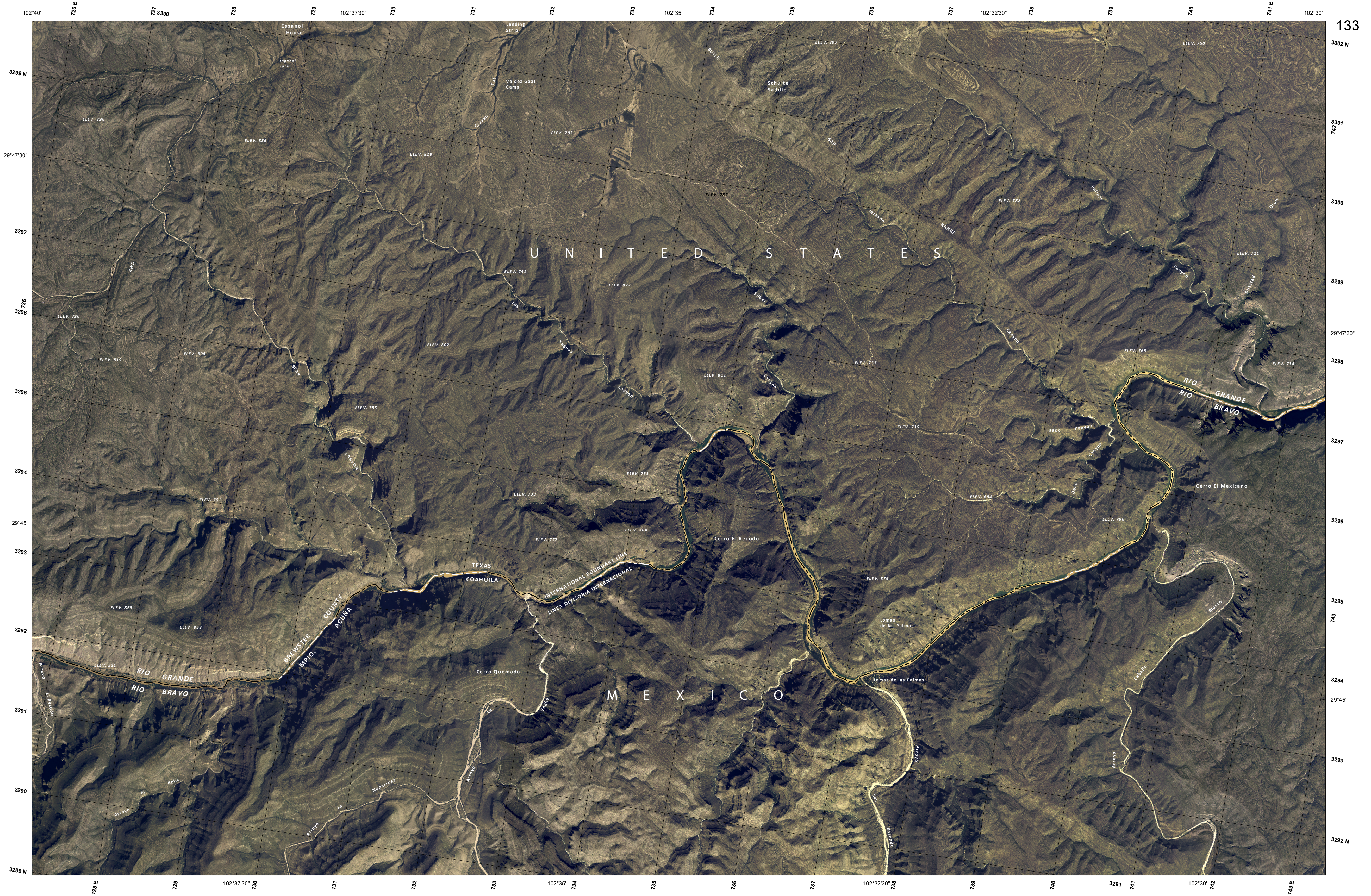
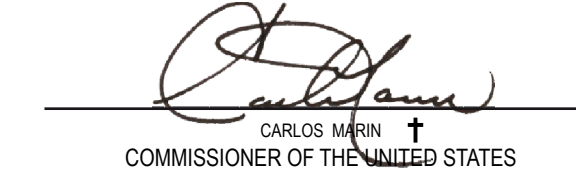


COMISION INTERNACIONAL DE LIMITES Y AGUAS
ENTRE MEXICO Y LOS ESTADOS UNIDOS
**LINEA DIVISORIA INTERNACIONAL
EN EL RIO BRAVO**
TRAZADA DE CONFORMIDAD CON EL TRATADO DE 1870



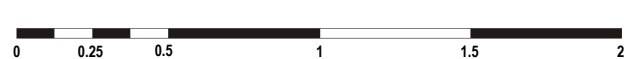
BULLIS GAP RANGE / CERRO EL MEXICANO
2008

INTERNATIONAL BOUNDARY AND WATER COMMISSION
UNITED STATES AND MEXICO
**INTERNATIONAL BOUNDARY LINE
IN THE RIO GRANDE**
DELINEATED IN ACCORDANCE WITH THE TREATY OF 1870



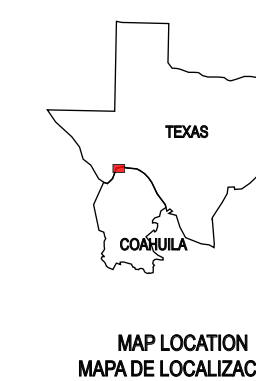
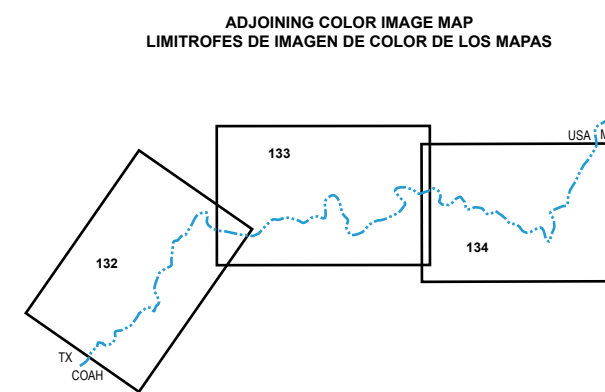
PROYECCION UNIVERSAL TRANSVERSA DE MERCATOR

CUADRICULA UNIVERSAL TRANSVERSA DE MERCATOR
A CADA KILOMETRO, ZONA 13
ESTE FOTOMAPA CON IMAGEN A COLOR
SE FORMO CON FOTOGRAFIAS AEREAS
TOMADAS EN AGOSTO DE 2004



Escala 1 : 25 000
ESCALA EN KILOMETROS
ELEVACIONES EN METROS

2008 MAGNETIC NORTH DECLINATION 7° 17' EAST
UTM GRID DECLINATION 1° 12'
ANNUAL MAGNETIC VARIATION 0° 7' W
DECLINACION DEL NORTE MAGNETICO PARA 2008 7° 17' E
DECLINACION DE LA CUADRICULA UTM 1° 12'
VARIACION MAGNETICA ANUAL 0° 7' W



UNIVERSAL TRANSVERSE MERCATOR PROJECTION

UNIVERSAL TRANSVERSE MERCATOR
IN KILOMETERS GRID, ZONE 13
THIS COLOR IMAGE PHOTOMAP WAS PREPARED
FROM AERIAL PHOTOGRAPHS
TAKEN IN AUGUST 2004



Scale 1 : 25 000
SCALE IN FEET
ELEVATION IN METERS