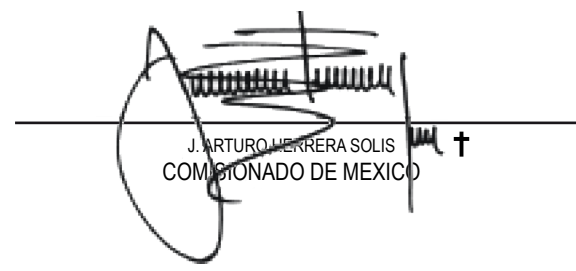


COMISION INTERNACIONAL DE LIMITES Y AGUAS
ENTRE MEXICO Y LOS ESTADOS UNIDOS
**LINEA DIVISORIA INTERNACIONAL
EN EL RIO BRAVO**

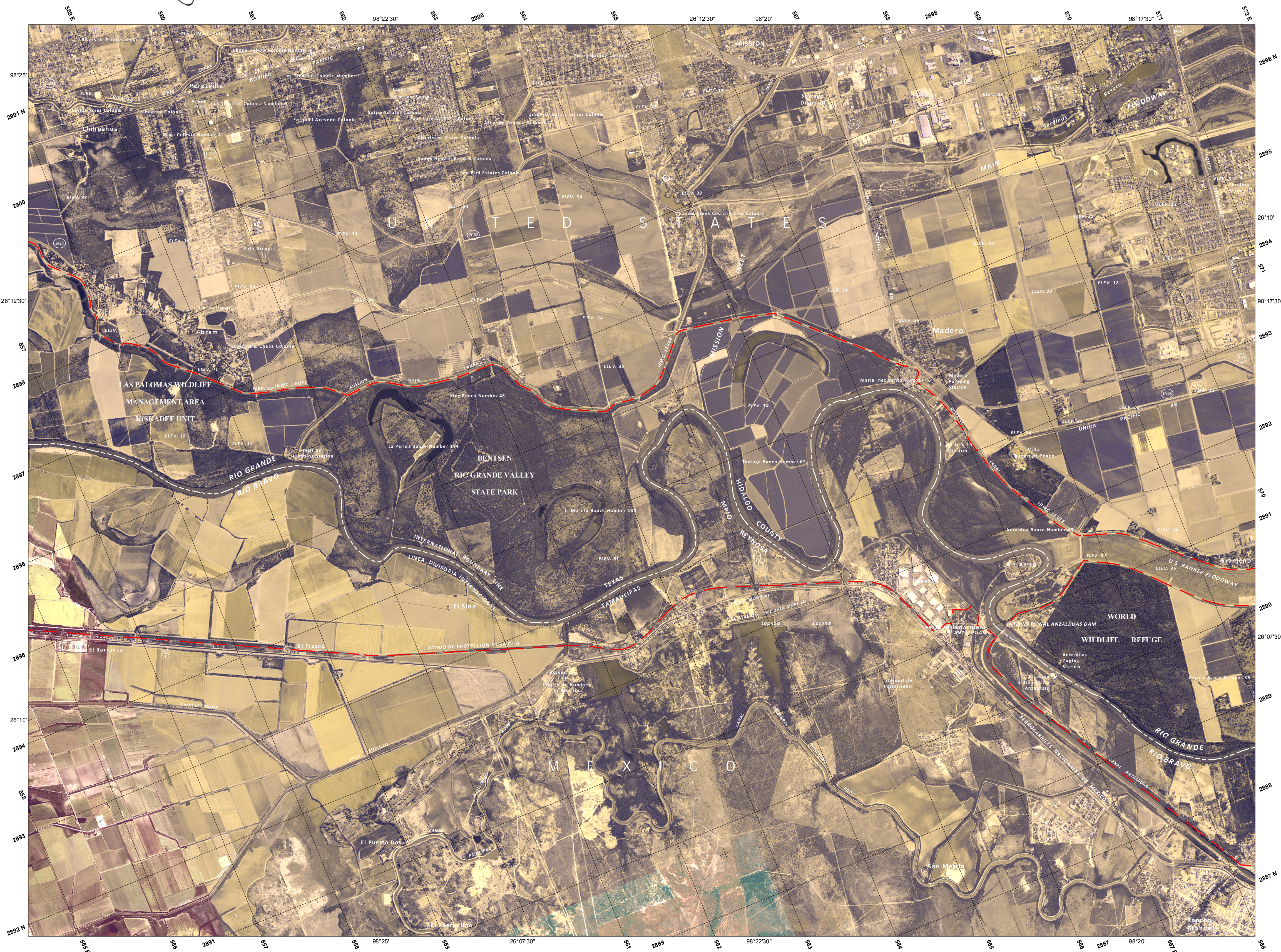
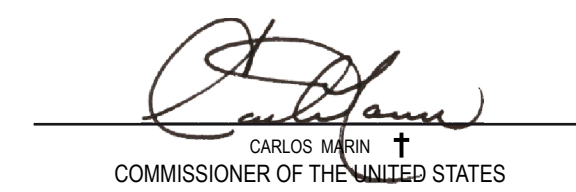
TRAZADA DE CONFORMIDAD CON EL TRATADO DE 1870



MISSION / LOS CAVAZOS
2008

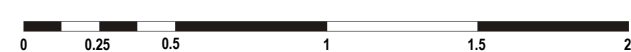
INTERNATIONAL BOUNDARY AND WATER COMMISSION
UNITED STATES AND MEXICO
**INTERNATIONAL BOUNDARY LINE
IN THE RIO GRANDE**

DELINEATED IN ACCORDANCE WITH THE TREATY OF 1870



PROYECCION UNIVERSAL TRANSVERSA DE MERCATOR

CUADRICULA UNIVERSAL TRANSVERSA DE MERCATOR
A CADA KILOMETRO, ZONA 14
ESTE FOTOMAPA CON IMAGEN A COLOR
SE FORMO CON FOTOGRAFIAS AEREAS
TOMADAS EN AGOSTO DE 2004

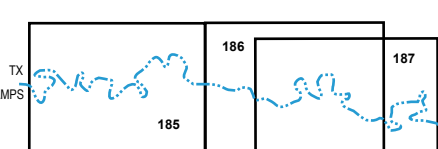


Escala 1 : 25 000
ESCALA EN KILOMETROS
ELEVACIONES EN METROS



2008 MAGNETIC NORTH DECLINATION 5° 16' EAST
UTM GRID DECLINATION 0° 17'
ANNUAL MAGNETIC VARIATION 0° 7' W
DECLINACION DEL NORTE MAGNETICO PARA 2008 5° 16' E
DECLINACION DE LA CUADRICULA UTM 0° 17'
VARIACION MAGNETICA ANUAL 0° 7' W

ADJOINING COLOR IMAGE MAP
LIMITROFES DE IMAGEN DE COLOR DE LOS MAPAS



MAP LOCATION
MAPA DE LOCALIZACION

UNIVERSAL TRANSVERSE MERCATOR PROJECTION

UNIVERSAL TRANSVERSE MERCATOR
IN KILOMETERS GRID, ZONE 14
THIS COLOR IMAGE PHOTOMAP WAS PREPARED
FROM AERIAL PHOTOGRAPHS
TAKEN IN AUGUST 2004



Scale 1 : 25 000
SCALE IN FEET
ELEVATION IN METERS